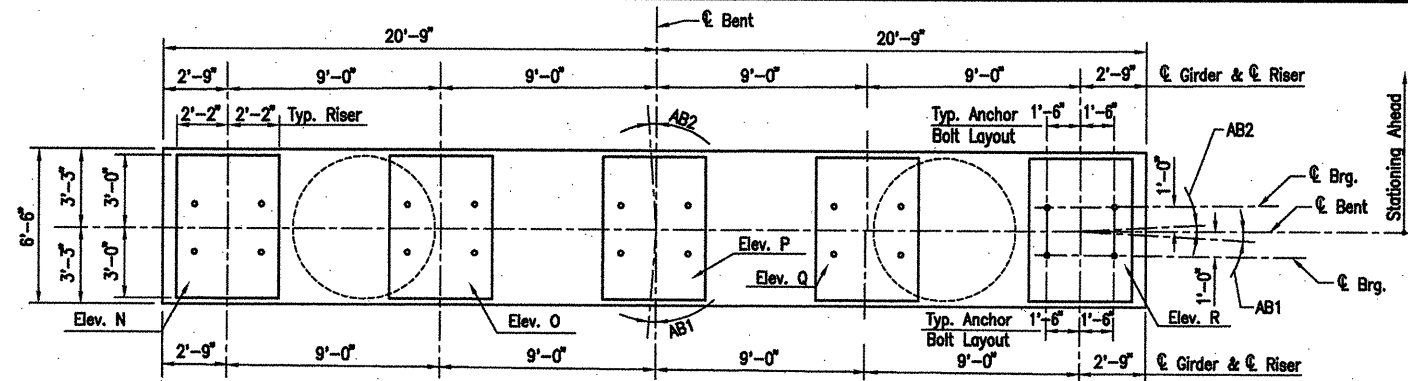


DATE REVISED	DATE FILMED	DATE REVISED	DATE FILMED	FED. ROAD NO.	STATE	FED. AID PROJ. NO.	SHEET NO.	TOTAL SHEETS
					ARK.			
						JOB NO. 110395	47	203
						06830 BENTS		47045



PLAN

Scale: 1/4" = 1'-0"

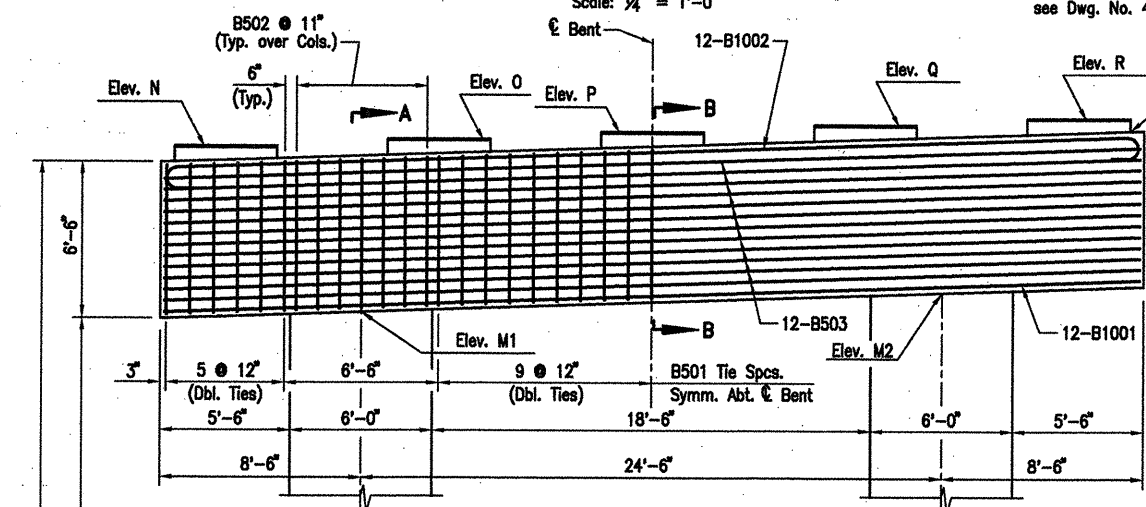
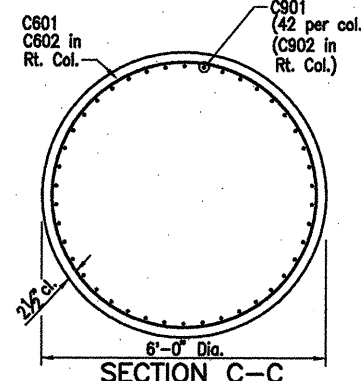


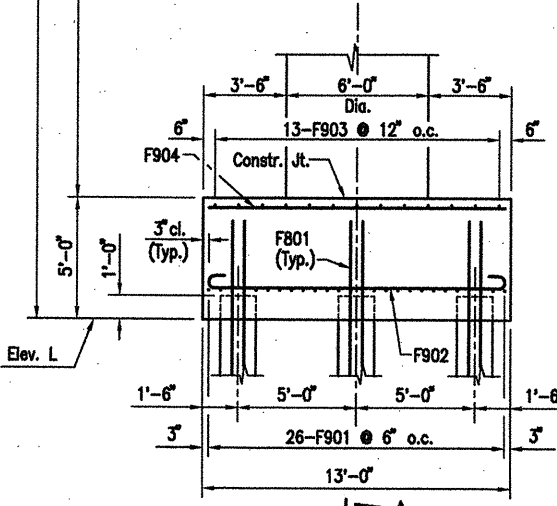
TABLE OF VARIABLES

Variable	65	66	67	68	69
A	61'-3"	62'-4"	60'-4"	58'-5"	57'-5"
B	49'-8"	50'-10"	48'-10"	44'-11"	45'-11"
C1	59'-1"	60'-2"	58'-2"	54'-4"	55'-2"
C2	59'-11"	61'-0"	59'-0"	55'-1"	55'-9"
D1	57'-9"	58'-10"	56'-10"	53'-0"	53'-10"
D2	58'-7"	59'-8"	57'-8"	53'-9"	54'-5"
E1	32'-5"	33'-6"	31'-6"	27'-7"	28'-7"
E2	33'-3"	34'-4"	32'-4"	28'-5"	29'-5"
F1	192	196	189	175	179
F2	195	199	192	178	181
G1	3403'-6"	3455'-6"	3334'-1"	3108'-8"	3160'-8"
G2	3438'-2"	3507'-6"	3386'-2"	3160'-8"	3195'-4"
Elev. L	150.68	149.78	151.74	155.71	154.83
Elev. M1	205.71	205.89	205.86	205.91	205.94
Elev. M2	206.54	206.72	206.69	206.72	206.50
Elev. N	212.35	212.53	212.49	212.56	212.64
Elev. O	212.66	212.84	212.80	212.86	212.82
Elev. P	212.96	213.14	213.10	213.16	213.00
Elev. Q	213.27	213.45	213.41	213.45	213.23
Elev. R	213.57	213.75	213.71	213.74	213.46



SECTION C-C

Scale: 1/2" = 1'-0"



ELEVATION

Scale: 1/4" = 1'-0"  
Looking Forward

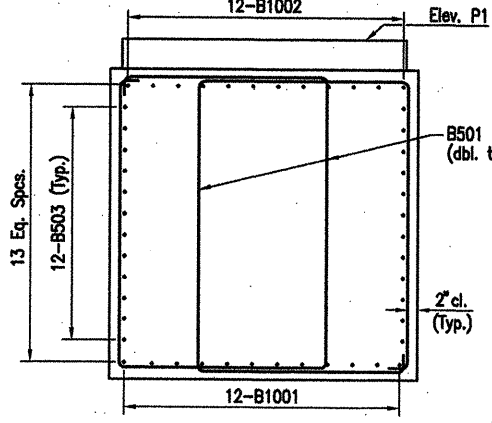
SECTION E-E

N.T.S.

Drill and grout F801 dowels 3'-0" into piles using an approved non-shrink grout or an epoxy grout listed on the QPL. Diameter of holes and installation procedure shall be as recommended by the grout manufacturer.

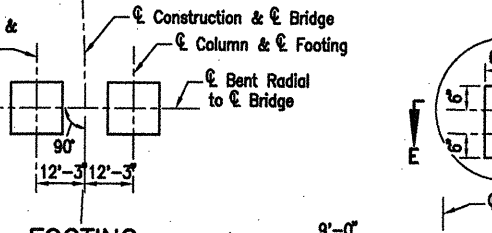
RISER DETAIL

Scale: 1/2" = 1'-0"



SECTION B-B

Scale: 1/2" = 1'-0"



FOOTING LOCATION SKETCH

N.T.S.

The riser reinforcing steel shall be placed with the bent cap reinforcing steel. The Contractor has the option to drill and grout the riser reinforcing steel at least 1'-6" into the cap using an approved non-shrink grout or an epoxy grout listed in the QPL. Diameter of holes and installation procedure shall be as recommended by the grout manufacturer. Place bent reinforcing properly to avoid damage. This work shall be paid under "Reinforcing Steel - Bridge".

C601 in Lt. Col. (C602 in Rt. Col.) - F1/F2 Turns @ 3 1/2" Pitch

C601/C602 is permitted in this zone

E1 Lt. Col. (E2 Rt. Col.) Lap Splice of 5'-0" in

C601/C602 is permitted in this zone

C601 in Lt. Col. (C602 in Rt. Col.) - F1/F2 Turns @ 3 1/2" Pitch

C601/C602 is permitted in this zone

E1 Lt. Col. (E2 Rt. Col.) Lap Splice of 5'-0" in

C601/C602 is permitted in this zone

C601 in Lt. Col. (C602 in Rt. Col.) - F1/F2 Turns @ 3 1/2" Pitch

C601/C602 is permitted in this zone

E1 Lt. Col. (E2 Rt. Col.) Lap Splice of 5'-0" in

C601/C602 is permitted in this zone

C601 in Lt. Col. (C602 in Rt. Col.) - F1/F2 Turns @ 3 1/2" Pitch

C601/C602 is permitted in this zone

E1 Lt. Col. (E2 Rt. Col.) Lap Splice of 5'-0" in

C601/C602 is permitted in this zone

C601 in Lt. Col. (C602 in Rt. Col.) - F1/F2 Turns @ 3 1/2" Pitch

C601/C602 is permitted in this zone

E1 Lt. Col. (E2 Rt. Col.) Lap Splice of 5'-0" in

C601/C602 is permitted in this zone

C601 in Lt. Col. (C602 in Rt. Col.) - F1/F2 Turns @ 3 1/2" Pitch

C601/C602 is permitted in this zone

E1 Lt. Col. (E2 Rt. Col.) Lap Splice of 5'-0" in

C601/C602 is permitted in this zone

C601 in Lt. Col. (C602 in Rt. Col.) - F1/F2 Turns @ 3 1/2" Pitch

C601/C602 is permitted in this zone

E1 Lt. Col. (E2 Rt. Col.) Lap Splice of 5'-0" in

C601/C602 is permitted in this zone

C601 in Lt. Col. (C602 in Rt. Col.) - F1/F2 Turns @ 3 1/2" Pitch

C601/C602 is permitted in this zone

E1 Lt. Col. (E2 Rt. Col.) Lap Splice of 5'-0" in

C601/C602 is permitted in this zone

C601 in Lt. Col. (C602 in Rt. Col.) - F1/F2 Turns @ 3 1/2" Pitch

C601/C602 is permitted in this zone

E1 Lt. Col. (E2 Rt. Col.) Lap Splice of 5'-0" in

C601/C602 is permitted in this zone

C601 in Lt. Col. (C602 in Rt. Col.) - F1/F2 Turns @ 3 1/2" Pitch

C601/C602 is permitted in this zone

E1 Lt. Col. (E2 Rt. Col.) Lap Splice of 5'-0" in

C601/C602 is permitted in this zone

C601 in Lt. Col. (C602 in Rt. Col.) - F1/F2 Turns @ 3 1/2" Pitch

C601/C602 is permitted in this zone

E1 Lt. Col. (E2 Rt. Col.) Lap Splice of 5'-0" in

C601/C602 is permitted in this zone

C601 in Lt. Col. (C602 in Rt. Col.) - F1/F2 Turns @ 3 1/2" Pitch

C601/C602 is permitted in this zone

E1 Lt. Col. (E2 Rt. Col.) Lap Splice of 5'-0" in

C601/C602 is permitted in this zone

C601 in Lt. Col. (C602 in Rt. Col.) - F1/F2 Turns @ 3 1/2" Pitch

C601/C602 is permitted in this zone

E1 Lt. Col. (E2 Rt. Col.) Lap Splice of 5'-0" in

C601/C602 is permitted in this zone

C601 in Lt. Col. (C602 in Rt. Col.) - F1/F2 Turns @ 3 1/2" Pitch

C601/C602 is permitted in this zone

E1 Lt. Col. (E2 Rt. Col.) Lap Splice of 5'-0" in

C601/C602 is permitted in this zone

C601 in Lt. Col. (C602 in Rt. Col.) - F1/F2 Turns @ 3 1/2" Pitch

C601/C602 is permitted in this zone

E1 Lt. Col. (E2 Rt. Col.) Lap Splice of 5'-0" in

C601/C602 is permitted in this zone

C601 in Lt. Col. (C602 in Rt. Col.) - F1/F2 Turns @ 3 1/2" Pitch

C601/C602 is permitted in this zone

E1 Lt. Col. (E2 Rt. Col.) Lap Splice of 5'-0" in

C601/C602 is permitted in this zone

C601 in Lt. Col. (C602 in Rt. Col.) - F1/F2 Turns @ 3 1/2" Pitch

C601/C602 is permitted in this zone

E1 Lt. Col. (E2 Rt. Col.) Lap Splice of 5'-0" in

C601/C602 is permitted in this zone

C601 in Lt. Col. (C602 in Rt. Col.) - F1/F2 Turns @ 3 1/2" Pitch

C601/C602 is permitted in this zone

E1 Lt. Col. (E2 Rt. Col.) Lap Splice of 5'-0" in

C601/C602 is permitted in this zone

C601 in Lt. Col. (C602 in Rt. Col.) - F1/F2 Turns @ 3 1/2" Pitch

C601/C602 is permitted in this zone

E1 Lt. Col. (E2 Rt. Col.) Lap Splice of 5'-0" in

C601/C602 is permitted in this zone

C601 in Lt. Col. (C602 in Rt. Col.) - F1/F2 Turns @ 3 1/2" Pitch

C601/C602 is permitted in this zone

E1 Lt. Col. (E2 Rt. Col.) Lap Splice of 5'-0" in

C601/C602 is permitted in this zone

C601 in Lt. Col. (C602 in Rt. Col.) - F1/F2 Turns @ 3 1/2" Pitch

C601/C602 is permitted in this zone

E1 Lt. Col. (E2 Rt. Col.) Lap Splice of 5'-0" in

C601/C602 is permitted in this zone

C601 in Lt. Col. (C602 in Rt. Col.) - F1/F2 Turns @ 3 1/2" Pitch

C601/C602 is permitted in this zone

E1 Lt. Col. (E2 Rt. Col.) Lap Splice of 5'-0" in

C601/C602 is permitted in this zone

C601 in Lt. Col. (C602 in Rt. Col.) - F1/F2 Turns @ 3 1/2" Pitch

C601/C602 is permitted in this zone

E1 Lt. Col. (E2 Rt. Col.) Lap Splice of 5'-0" in

C601/C602 is permitted in this zone

C601 in Lt. Col. (C602 in Rt. Col.) - F1/F2 Turns @ 3 1/2" Pitch

C601/C602 is permitted in this zone

E1 Lt. Col. (E2 Rt. Col.) Lap Splice of 5'-0" in

C601/C602 is permitted in this zone

C601 in Lt. Col. (C602 in Rt. Col.) - F1/F2 Turns @ 3 1/2" Pitch

C601/C602 is permitted in this zone

E1 Lt. Col. (E2 Rt. Col.) Lap Splice of 5'-0" in

C601/C602 is permitted in this zone

C601 in Lt. Col. (C602 in Rt. Col.) - F1/F2 Turns @ 3 1/2" Pitch

C601/C602 is permitted in this zone

E1 Lt. Col. (E2 Rt. Col.) Lap Splice of 5'-0" in

C601/C602 is permitted in this zone

C601 in Lt. Col. (C602 in Rt. Col.) - F1/F2 Turns @ 3 1/2" Pitch

C601/C602 is permitted in this zone

E1 Lt. Col. (E2 Rt. Col.) Lap Splice of 5'-0" in

C601/C602 is permitted in this zone

C601 in Lt. Col. (C602 in Rt. Col.) - F1/F2 Turns @ 3 1/2" Pitch

C601/C602 is permitted in this zone

E1 Lt. Col. (E2 Rt. Col.) Lap Splice of 5'-0" in

C601/C602 is permitted in this zone

C601 in Lt. Col. (C602 in Rt. Col.) - F1/F2 Turns @ 3 1/2" Pitch

C601/C602 is permitted in this zone

E1 Lt. Col. (E2 Rt. Col.) Lap Splice of 5'-0" in

C601/C602 is permitted in this zone

C601 in Lt. Col. (C602 in Rt. Col.) - F1/F2 Turns @ 3 1/2" Pitch

C601/C602 is permitted in this zone

E1 Lt. Col. (E2 Rt. Col.) Lap Splice of 5'-0" in

C601/C602 is permitted in this zone

C601 in Lt. Col. (C602 in Rt. Col.) - F1/F2 Turns @ 3 1/2" Pitch

C601/C602 is permitted in this zone

E1 Lt. Col. (E2 Rt. Col.) Lap Splice of 5'-0" in

C601/C602 is permitted in this zone

C601 in Lt. Col. (C602 in Rt. Col.) - F1/F2 Turns @ 3 1/2" Pitch

C601/C602 is permitted in this zone

E1 Lt. Col. (E2 Rt. Col.) Lap Splice of 5'-0" in

C601/C602 is permitted in this zone

C601 in Lt. Col. (C602 in Rt. Col.) - F1/F2 Turns @ 3 1/2" Pitch

C601/C602 is permitted in this zone

E1 Lt. Col. (E2 Rt. Col.) Lap Splice of 5'-0" in

C601/C602 is permitted in this zone

C601 in Lt. Col. (C602 in Rt. Col.) - F1/F2 Turns @ 3 1/2" Pitch

C601/C602 is permitted in this zone

E1 Lt. Col. (E2 Rt. Col.) Lap Splice of 5'-0" in

C601/C602 is permitted in this zone

C601 in Lt. Col. (C602 in Rt. Col.) - F1/F2 Turns @ 3 1/2" Pitch

C601/C602 is permitted in this zone

E1 Lt. Col. (E2 Rt. Col.) Lap Splice of 5'-0" in

C601/C602 is permitted in this zone

C601 in Lt. Col. (C602 in Rt. Col.) - F1/F2 Turns @ 3 1/2" Pitch

C601/C602 is permitted in this zone

E1 Lt. Col. (E2 Rt. Col.) Lap Splice of 5'-0" in

C601/C602 is permitted in this zone

C601 in Lt. Col. (C602 in Rt. Col.) - F1/F2 Turns @ 3 1/2" Pitch

C601/C602 is permitted in this zone

E1 Lt. Col. (E2 Rt. Col.) Lap Splice of 5'-0" in

C601/C602 is permitted in this zone

C601 in Lt. Col. (C602 in Rt. Col.) - F1/F2 Turns @ 3 1/2" Pitch

C601/C602 is permitted in this zone

E1 Lt. Col. (E2 Rt. Col.) Lap Splice of 5'-0" in

C601/C602 is permitted in this zone

C601 in Lt. Col. (C602 in Rt. Col.) - F1/F2 Turns @ 3 1/2" Pitch

C601/C602 is permitted in this zone

E1 Lt. Col. (E2 Rt. Col.) Lap Splice of 5'-0" in

C601/C602 is permitted in this zone

C601 in Lt. Col. (C602 in Rt. Col.) - F1/F2 Turns @ 3 1/2" Pitch

C601/C602 is permitted in this zone

E1 Lt. Col. (E2 Rt. Col.) Lap Splice of 5'-0" in

C601/C602 is permitted in this zone

C601 in Lt. Col. (C602 in Rt. Col.) - F1/F2 Turns @ 3 1/2